

# VAULT

3D SPATIAL INTELLIGENCE

## Optimised Construction

3D Cloud Build Platform  
for Construction



360 Progress  
Photos



Plan  
Viewer



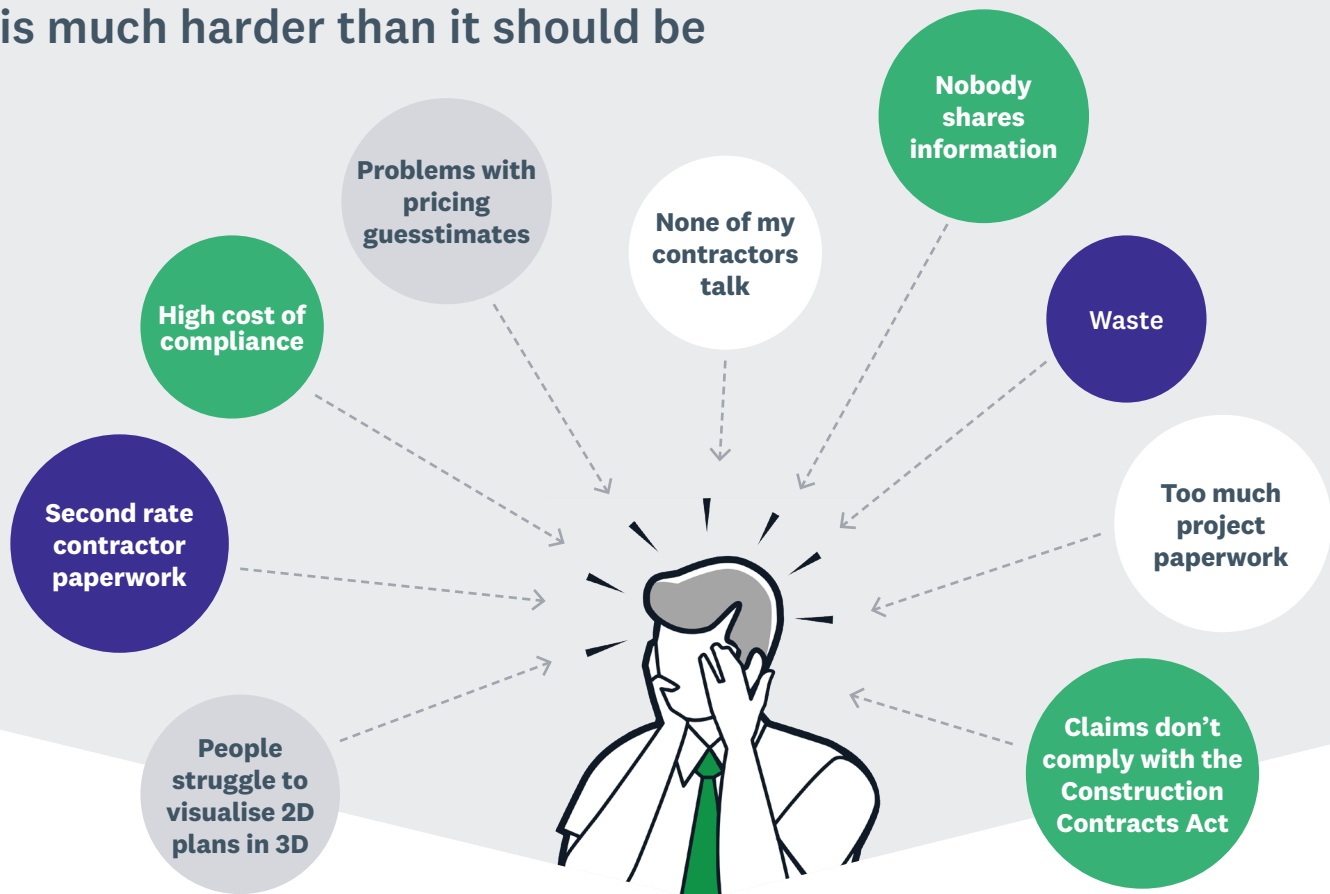
Enviro  
Monitor



Site  
Intel



Managing the construction process  
is much harder than it should be

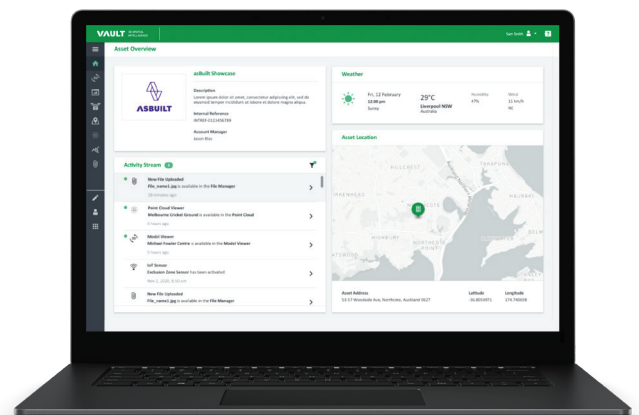


**Vault is the solution construction teams like yours use to overcome these traditional pain points, digitally.**

Vault is a **3D cloud construction platform** enabling commercial construction teams to harness digital twin technologies to build smarter and communicate faster.

Vault connects teams, workflows, and data at every stage of building to ONE source of digital truth.

With the benefit of BIM solutions every stakeholder can easily share, collect and connect the information through the whole lifecycle of the construction process and beyond.

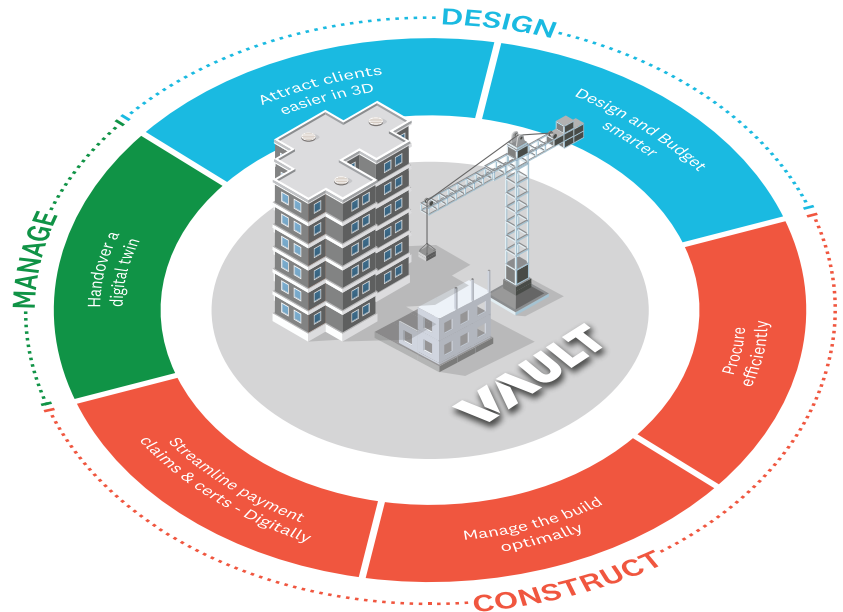


# Benefits of Vault

Historically our traditional build process relies only on flat 2D architecture and engineering plans...

We then progressed to using 3D models to communicate with the client and consultant teams, but we've kept using 2D plans to lead the construction process. Why!

Now it's time to combine them all to create a data-led three dimensional working and communication environment for the construction teams.



## DESIGN

A 3D picture speaks 10,000 words! Help your clients and team visualise their construction projects with the benefit of rich, rendered 3D graphic models on **Vault**. Centralised and easily shareable, you can show the design models and more with ease.

**Vault**, as one source of truth, removes the need for guesstimates and the inaccuracies that sneak in from manual file keeping, double data entry and human interpretation.

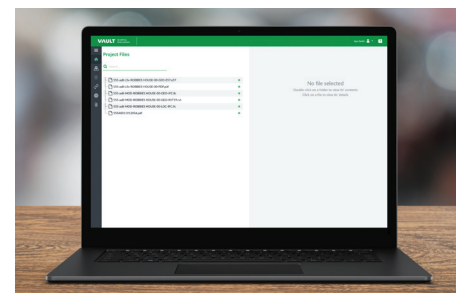
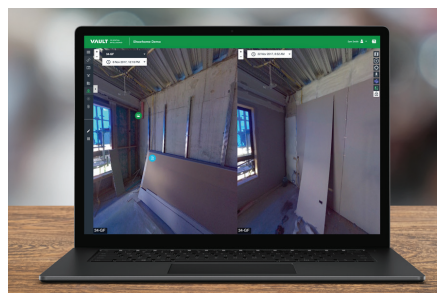
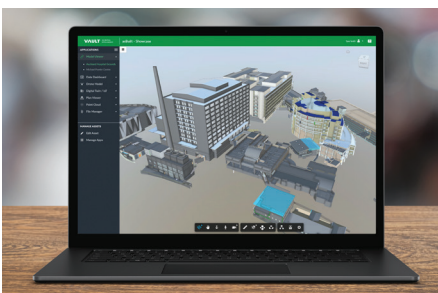
## CONSTRUCT

When the build is underway, use the digital tools in **Vault** to increase productivity and reduce manual tasks. Digitise and link site sign-ins, inductions and compliance documentation, from producer statements to guarantees and warranties all in ONE system.

Update clients with 360° progress photos from the platform - using our Split Screen Viewer you can see the building evolution side-by-side.

## MANAGE

On project completion, hand over a digital twin of your client's build project with all the information in the right place. Don't waste time and effort on compiling a handover folder. It's all done as you move through the build timeline. All you have to do is give it to the client!



Call us or email us today at [info@asbuiltvault.com](mailto:info@asbuiltvault.com) to speak to one of our Vault specialists.

[asbuiltvault.com](http://asbuiltvault.com)



**Auckland**  
T: +64 9 377 8450  
57 Woodside Avenue  
Northcote  
Auckland 0627  
New Zealand

**Sydney**  
T: +61 2 8880 0426  
4 Holt Street  
McMahons Point  
Sydney, NSW 2060  
Australia